



Nestled in the popular area of The Firs, Queens Crescent this modern terraced house presents an excellent opportunity for those seeking a comfortable and stylish home. With three well-proportioned bedrooms, this property is ideal for families and commuters.

Upon entering, you are welcomed into a spacious entrance hall that leads to a generous sitting room. The kitchen / dining room is situated across the rear of the property and has been refitted to provide ample storage. There is a handy store room just off the kitchen which could be put to any number of uses.

The first floor features; a landing area, well-appointed bathroom suite and separate cloakroom plus three well proportioned bedrooms, two of which with built-in wardrobes. Externally the property benefits a large open front garden and an enclosed garden with access gate to rear.

Viewing

Viewings Strictly by appointment with the sole selling agents Atwell Martin call or e-mail us today to confirm your appointment | 65 New Road, Chippenham, Wiltshire SN15 1ES

Situation - Chippenham

Chippenham itself has a wide range of amenities to include High Street retailers plus supermarkets and retail parks and, in addition, there is a leisure centre with indoor swimming pool, library, cinema and public parks. Chippenham also benefits from excellent schooling with numerous primary and three highly sought after secondary schools. For those wishing to commute there is also a regular main line rail service from Chippenham station to London (Paddington) and

the West Country and the M4 motorway is easily accessed via Junction 17 a few miles north of the town.

Property Information

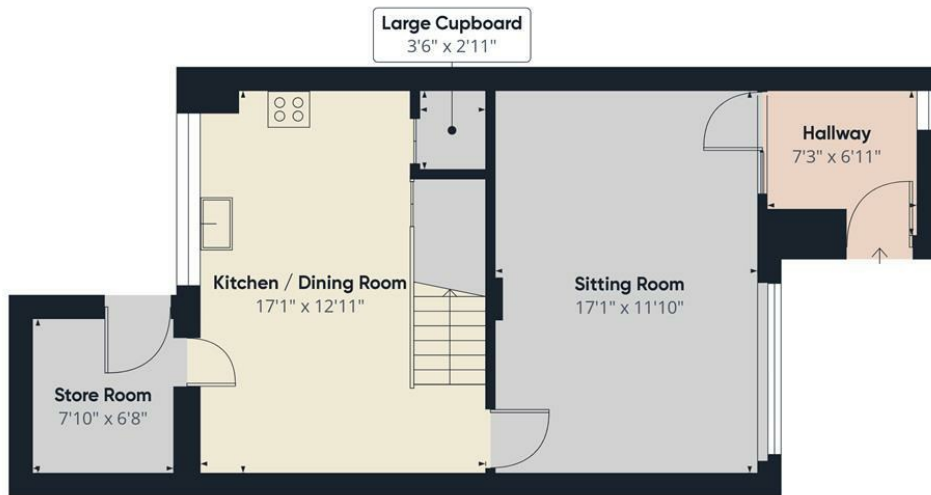
Utilities/Services - Mains Electric, Water & Drainage, Gas Central Heating

Wiltshire Council Tax - Band B

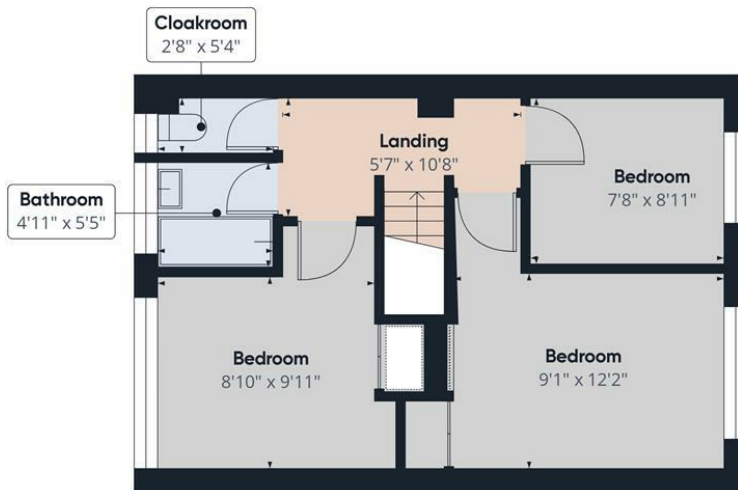
Tenure - Freehold







Ground Floor



Floor 1



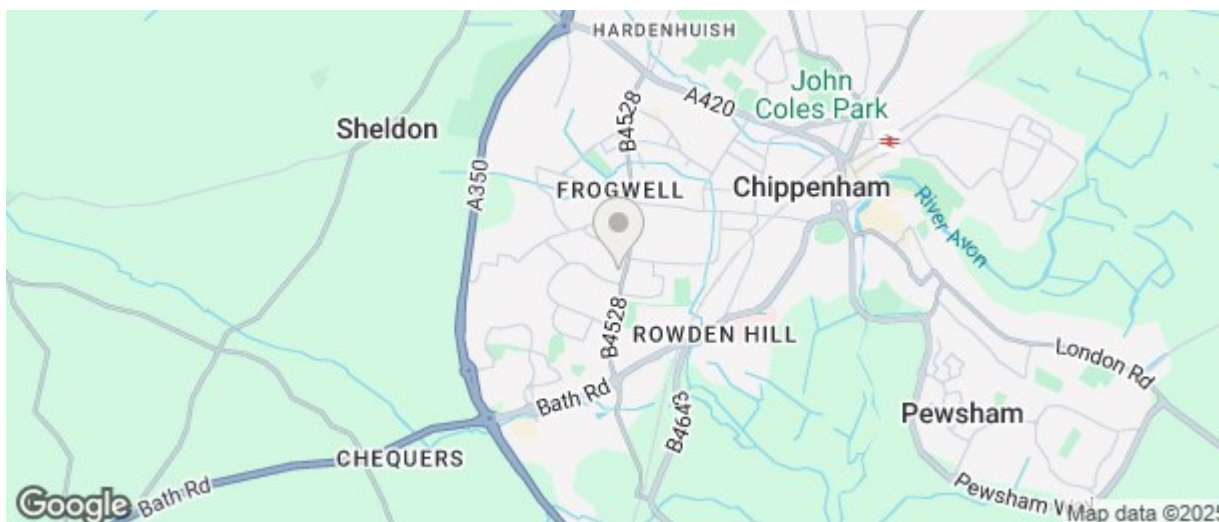
Approximate total area[®]
915.59 ft²

(1) Excluding balconies and terraces.

While every attempt has been made to ensure accuracy, all measurements are approximate, not to scale. This floor plan is for illustrative purposes only.

Calculations were based on RICS IPMS 3C standard. Please note that calculations were adjusted by a third party and therefore may not comply with RICS IPMS 3C.

GIRAFFE360



Energy Efficiency Rating		
	Current	Potential
Very energy efficient - lower running costs		
(92 plus) A		86
(81-91) B		
(69-80) C	72	
(55-68) D		
(39-54) E		
(21-38) F		
(1-20) G		
Not energy efficient - higher running costs		
England & Wales EU Directive 2002/91/EC		
Environmental Impact (CO ₂) Rating		
	Current	Potential
Very environmentally friendly - lower CO ₂ emissions		
(81-91) A		
(69-80) B		
(55-68) C		
(39-54) D		
(21-38) E		
(1-20) F		
(1-20) G		
Not environmentally friendly - higher CO ₂ emissions		
England & Wales EU Directive 2002/91/EC		

The particulars are set out as a general outline only for the guidance of intended purchasers or lessees, and do not constitute, any part of a contract. Nothing in these particulars shall be deemed to be a statement that the property is in good structural condition or otherwise nor that any of the services, appliances, equipment or facilities are in good working order. Purchasers should satisfy themselves of this prior to purchasing